

Fig. 5. Definition of blocks for the 2005 sighting survey.

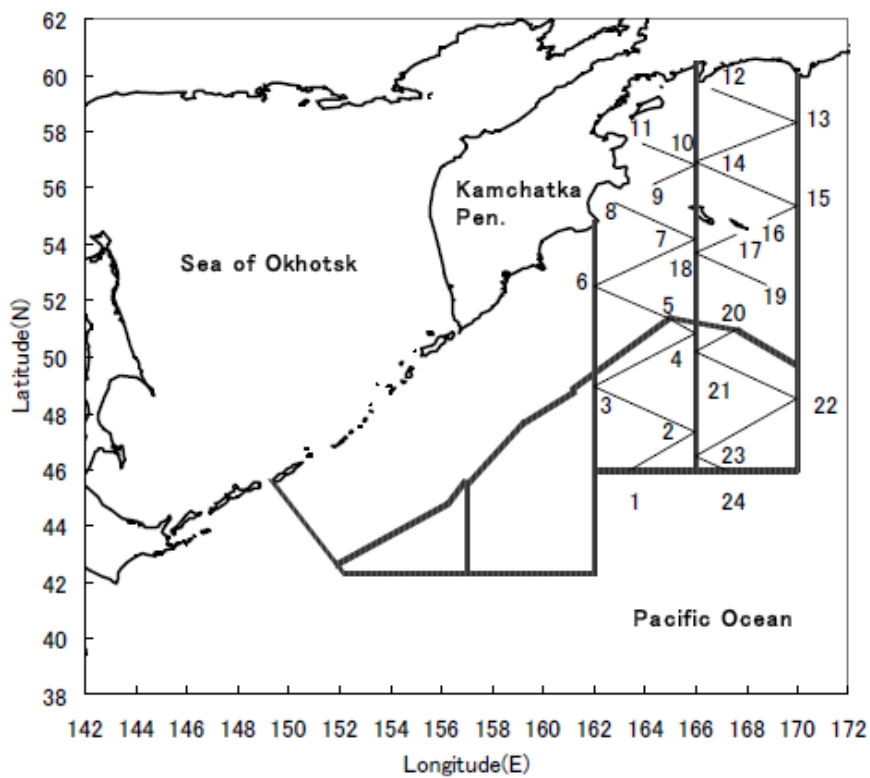


Fig. 6. Pre-determined track line for *Shonan-maru* in 2005.

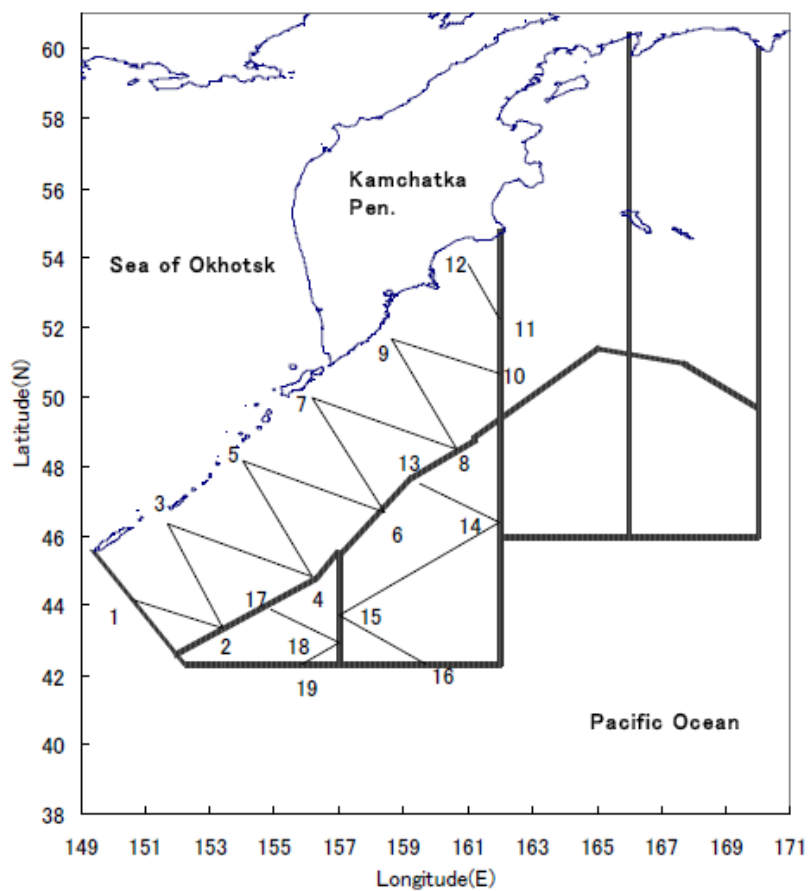


Fig. 7. Pre-determined track line for *Shonan-maru No.2* in 2005.

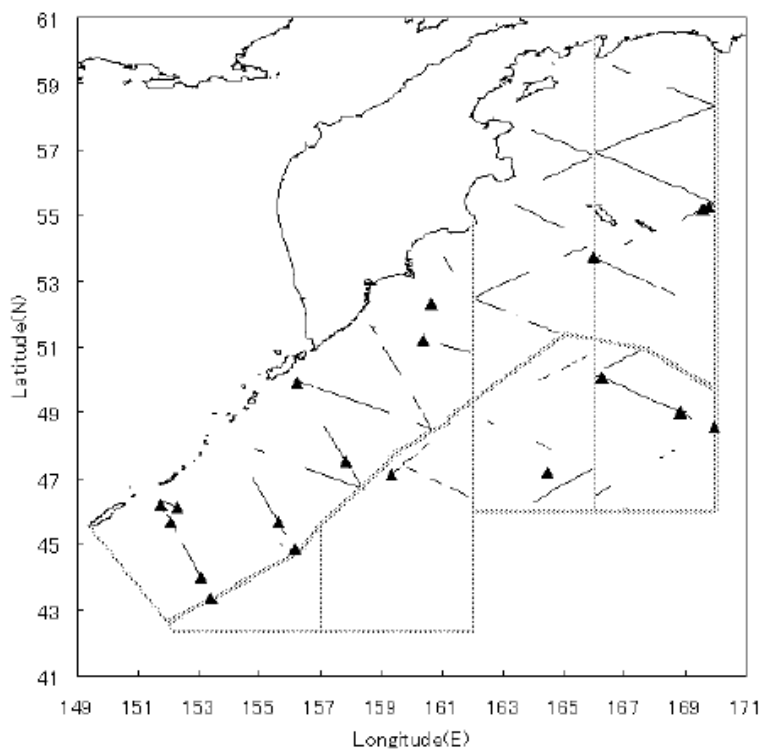


Fig. 8. Track line traversed with sighting effort and sighting positions of common minke whales (black triangle) in the 2005 survey.

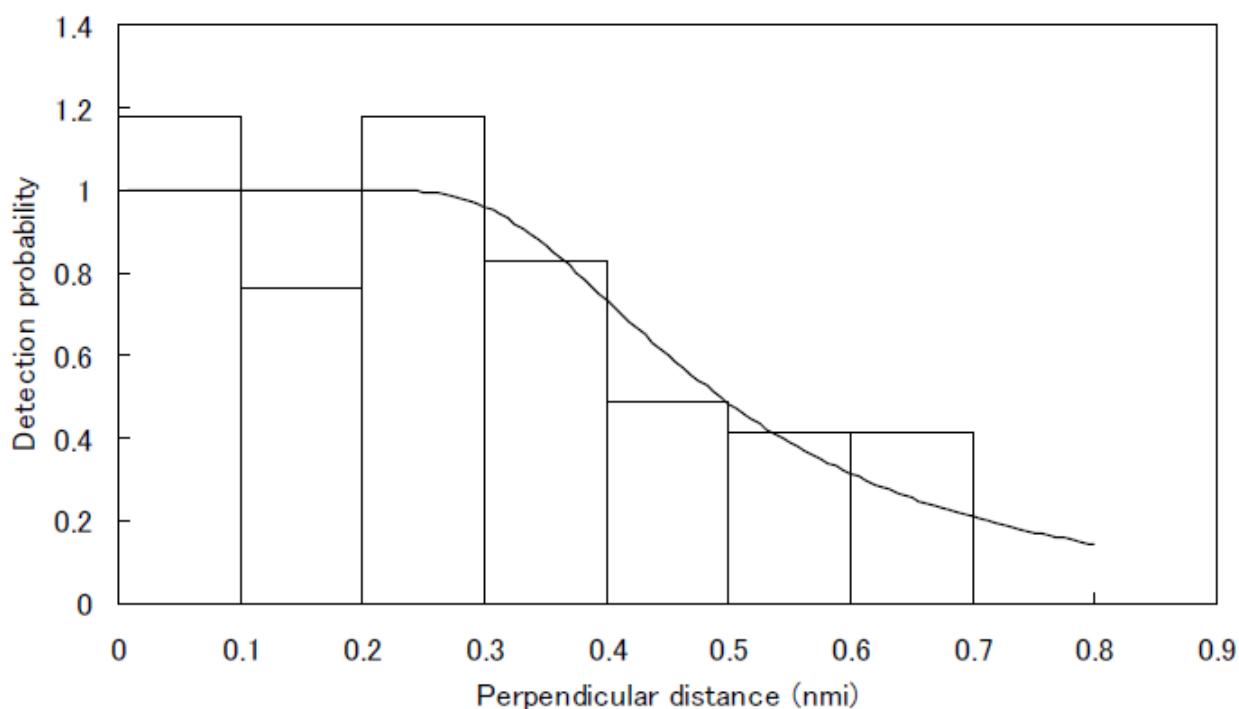


Fig. 9. Perpendicular distribution and detection curve fitted to the 2003 and 2005 sighting survey data.

Table 1. Research distance and number of sightings.

Block	R/V	Research distance (nmi)	No. primary sightings (schools – animals)
Sea of Okhotsk, 2003 survey			
SHA	SM2	304.2	29 – 34
CNW	SM2	575.0	4 – 4
CSW	SM2	536.3	8 – 8
11W	SM2	182.5	19 – 22
CE	SM1	449.2	4 – 4
OE	SM1	138.5	0 – 0
ONW	SM1	136.0	0 – 0
OSW	SM1	180.0	4 – 4
East of Kurile archipelago – Kamchatka, 2005 survey			
KUL	SM2	868.2	6 – 6
PAE	SM2	60.7	0 – 0
PAW	SM2	0	-
BEN	SM1	578.1	2 – 2
BES	SM1	359.5	2 – 2
KAN	SM1	418.4	0 – 0
KAS	SM1	184.9	0 – 0

Table 2. Abundance estimate from the 2003 and 2005 sighting surveys.

Block	N	CV%	95%	C.I.
<b>Sea of Okhotsk (2003)</b>				
11W	1,496	92.6	320 -	6,994
CSW	2,882	34.1	1,506 -	5,516
OSW	4,035	88.9	904 -	18,002
Subtotal(12SW)	6,917	53.8	2,576 -	18,573
CE	935	49.6	373 -	2,342
CNW	772	36	390 -	1,529
ONW	1,335	36.7	666 -	2,678
SHA	16,981	19.8	11,571 -	24,920
Subtotal(12NE)	20,023	17.2	14,333 -	27,972
Total	28,436	18.5	19,866 -	40,703
<b>East of Kuril Islands – Kamchatka pen. (2005)</b>				
KUL	728	47	303 -	1,747
BEN	244	152.3	29 -	2,088
Total	972	52	373 -	2,534